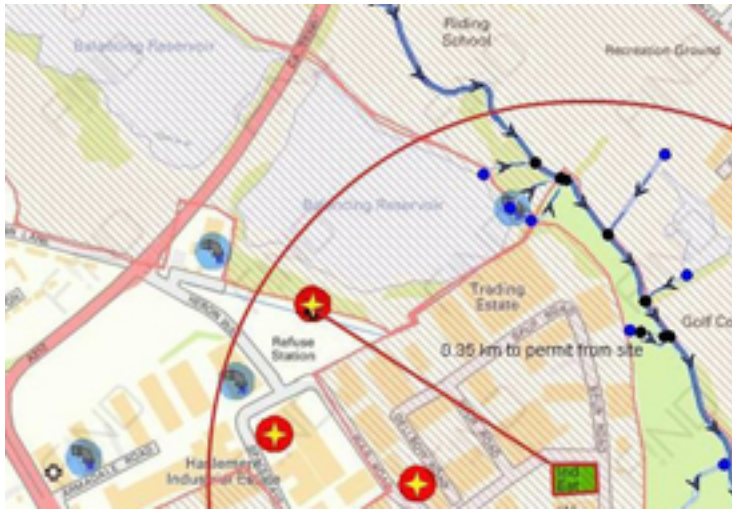


FIND Maps Releases Environmental Data Viewing Subscription Service ‘EnviroFIND’

Written by Karl

Tuesday, 26 July 2011 13:13 -



FIND Maps (www.findmaps.co.uk), the UK's most advanced online mapping website for professionals, has announced the launch of ‘EnviroFIND’ – an online commercial environmental data viewing subscription service.

EnviroFIND has been specifically designed for organisations which need to view Environment Agency and BGS/NERC data while being legally compliant. It is currently the only web source offering instant access to this information at flat or reduced rates.

Rob Vollans, of Mott MacDonald, said “EnviroFIND is just what the industry needs right now with a user-friendly interface that gives the user access to key environmental data of their choosing, rather than being presented with pages of data which the user does not want or possibly need.”

Jonathan Cundall, 4Site Associates Ltd, said “EnviroFIND is an intuitive web based service which provides our business the flexibility to not only purchase data at very competitive prices, but also to review and assess a very wide range of data quickly and in an iterative approach. This real time service allows us to save time and money and provide an improved service to all our clients. We believe that EnviroFIND moves the provision of environmental data to the next level.”

Jonathan Coleman, Environmental Business Manager at FIND Maps, said: “Given the challenging economic conditions currently facing environmental and geotechnical clients,

FIND Maps Releases Environmental Data Viewing Subscription Service 'EnviroFIND'

Written by Karl

Tuesday, 26 July 2011 13:13 -

EnviroFIND provides a cost effective solution which gives commercial organisations rapid access to Environment Agency and BGS data, with the assurance that all licencing and royalty issues are taken care of. Our clients will benefit from this first product and increasing functionality as we push the boundaries of WebGIS for the environmental and geotechnical sectors. EnviroFIND represents a truly unique product.”

EnviroFIND was developed in collaboration with key environmental clients already using FIND Maps. This has resulted in a service which meets industry requirements and can be delivered at a low cost - equivalent to just a few pounds per day. A subscription to EnviroFIND allows an unlimited number of views of basic BGS/NERC data layers and Environment Agency data, including NAFRA and EA Flood Zones. More sophisticated BGS layers such as Ground Stability and Radon Affected areas data can also be viewed at reduced rates.

The service will allow a range of organisations to use environmental data more effectively. Desk Studies and bid preparations can be completed more efficiently as specific data can be targeted rather than having to sift through lengthy reports. Clients will be able to use our online interactive tools to create their own annotations and graphics prior to printing the data.

EnviroFIND costs between £25-35 per month depending upon the subscription period and number of licences purchased.

To sign up just go to <http://www.findmaps.co.uk/enviroFind>